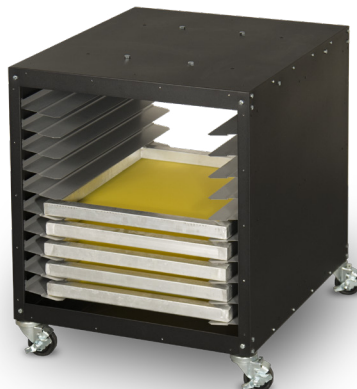


SHOP ORGANIZERS

Utility Cart UC-1000

High strength Utility Cart can be used as a stand for shop equipment!!

- CAPACITY** Holds up to 23" x 31" Screens.
 - MOBILE** Locking casters for easy mobility
 - ADJUSTABLE** Configure the shelves how you want them!
 - CONVENIENT** Optional side shelves for storing squeegees, ink scoops & small tools (up to 4)
 - LIGHT TIGHT** Optional door kit turns cart into storage unit for coated screens.
 - DIMENSIONS** 32" x 26" x 32" (81 x 66 x 81cm)
- Shipping: 29" x 42" x 6" @ 98lbs (74 x 107 x 16cm @ 44.5kg)



Shown with E-100-2128

Options

- Squeegee side shelves
- Additional inner shelves
- Door kit
- Mounting kits available for many products

Screen Rack

The Screen Rack holds up to 24 screens and comes in five convenient sizes with angled shelves to contact only the edge of the screen. Screen racks include a 1 year warranty on manufacturer's defects.

Choose your size

Half-rack options to hold 11 screens are also available in each size.

	SR-23	SR-28	SR-31	SR-36	SR-38 (MHM Screens)
Capacity	23" wide (58cm)	28" (71cm)	31" (79cm)	36" (91cm)	38" (96cm)
Assembled	24.5" x 29" x 71" tall	24.5" x 33" x 71" tall	24.5" x 36" x 71" tall	24.5" x 41" x 71" tall	24.5" x 43" x 71" tall
Dimensions	(62 x 74 x 180cm)	(62 x 84 x 180cm)	(62 x 92 x 180cm)	62 x 107 x 180cm)	62 x 109 x 180cm)
Shipping	2 @ 43" x 29" x 9" (37 lbs)	2 @ 43" x 29" x 9" (37 lbs)	2 @ 43" x 29" x 9" (37 lbs)	2 @ 43" x 29" x 9" (37 lbs)	2 @ 43" x 29" x 9" (37 lbs)
(Box #1 & 2)	2 @ 109x74x23cm (16.8kg)	2 @ 109x74x23cm (16.8kg)	2 @ 109x74x23cm (16.8kg)	2 @ 109x74x23cm (16.8kg)	2 @ 109x74x23cm (16.8kg)
(Box #3)	32" x 6" x 6" (13 lbs)	38" x 6" x 6" (15 lbs)	38" x 6" x 6" (15 lbs)	44" x 6" x 6" (18 lbs)	44" x 6" x 6" (18 lbs)
	81 x 15 x 15cm (5.9kg)	97 x 15 x 15cm (6.8kg)	97 x 15 x 15cm (6.8kg)	112 x 15 x 15cm (8.2kg)	112 x 15 x 15cm (8.2kg)



Job-Cart

Job cart with screen, squeegee, and accessory storage

- MOBILE** Locking casters for easy mobility
 - ADJUSTABLE** Pegboard for endless storage possibilities!
 - CONVENIENT** Keep screens, squeegees, and supplies organized for efficient job setup and teardown.
- | | |
|------------------------|-----------------------|
| SR-23-JC | SR-38-JC |
| (11) 23" x 31" Screens | (11) 38" wide Screens |
| 24.5" x 37.4" x 38" | 24.5" x 50.9" x 38" |
| (62 x 95 x 97cm) | (62 x 129 x 97cm) |
- CAPACITY** w/ squeegees and hooks



Images show squeegee storage on side 1 and peg board on side 2. Supplies and accessories shown not included.

Pallet Rack

Conveniently store and organize your pallets for V-1000 and V-2000HD with this heavy duty rack on wheels.

Must add V1 and V2 pallet mounts separately.

Mount for V-1000 - 11-02-006-0

Mount for V-2000HD - 11-02-005-0

VP-CRUISER

Freestanding with wheels
Holds up to (12) V2 or (18) V1 mounts

VP-RACK

Wall mounted w/ mounting hardware
Holds up to (6) V2 or (9) V1 mounts



Shown with six (6) V2 pallet mounts. Pallets not included.

Shown with twelve (12) V2 pallet mounts. Pallets not Included.

