

DTG/WATER BASED INFRARED DRYERS

Lo-E SERIES

**15 YEAR
HEATER WARRANTY**



- Low wattage, Lo-E1D draws 12.5A @ 230V
- Advanced technology speeds curing of inkjet, water-based, and discharge inks.
- Powered exhaust system to remove fumes/moisture within chamber
- Excellent air flow to cool the skin of the dryer
- Fully expandable to add additional chambers for increased productivity

CE CERTIFIED
BY CERTIFICATION EXPERTS
THE NETHERLANDS

	Lo-E1D	Lo-E2D	Lo-E3D
Total Wattage	2,850w (2.85kW) @230V	4,600w (4.6kW) @230V	6,350w (6.35kW) @230V
Belt Width	30" (76.2 cm)	30" (76.2 cm)	30" (76.2 cm)
Heater Width	24" (61 cm)	24" (61 cm)	24" (61 cm)
Conveyor Length	48" (122 cm)	88" (224 cm)	88" (224 cm)
Chamber Length	18" (46 cm)	35" (89 cm)	52" (132 cm)
Powered Exhaust	280 CFM (7.9 CMM)	370 CFM (10.5 CMM)	370 CFM (10.5 CMM)

CURE TIMES

Dig. White Ink @ 3 min*	23/hr	45/hr	64/hr
DTG Pretreat only*	64/hr	88/hr	180/hr
Waterbased @ 60 secs.*	64/hr	88/hr	180/hr



Lo-E series dryers have a dual zone heat control, with a boost zone to quickly reach cure temperature. This makes it GREAT for inkjet curing!

Features

HEAVY DUTY	"X-Series" Conveyor Belt Roller Tracking System with Teflon coated fiberglass belt and HD belt motor
ACCURATE ADJUSTABLE	Dual digital PID Temperature controller is accurate to +/-1°F 3" - 7" (7.6 - 17.7 cm) belt-to-heater clearance, adjustable separately on each side for each heater
EXHAUST	High powered exhaust to remove fumes and moisture
CONSISTENT	Precision DC belt speed control w/ digital display
EXPANDABLE	Add additional heat chambers and conveyor extensions
EFFICIENT	Draws only 12.5 amps for highly efficient curing (Lo-E1D)

Options

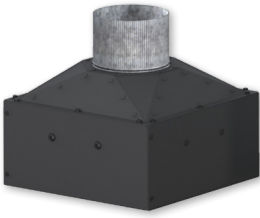
- Additional heat chambers
- Belt extensions, front or rear, 18" (46 cm) increments
- Conveyor Air Bar
- Locking casters for easy mobility
- Donut Probe

* Production speeds are estimates are based on 16" centers and will vary depending on ink manufacturer, humidity of shop, and other variables.



LoE_0923

INFRARED DRYER ACCESSORIES



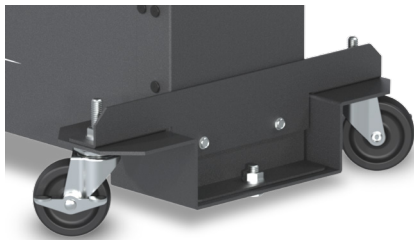
EXH-D
Add-On exhaust for
D-100 and D-1000



SI-27
Stand for D-100



**SI-27 W/
SI-27-DEMT**
Stand for D-1000



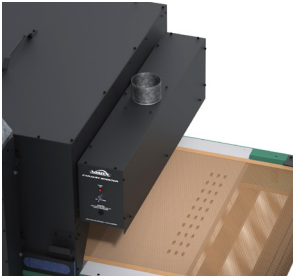
WS-E-DD
Drop Down Wheel Set for
DB, LR & EC-I Dryers

WS-EHD

Drop Down Wheel Set for
EC-II, ER & BR Dryers



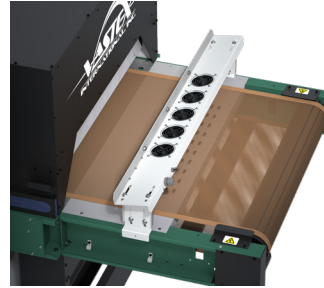
WS-EC
Standard Wheel Set for
all non-tabletop Dryers



EXHAUST HOOD

FEATURES

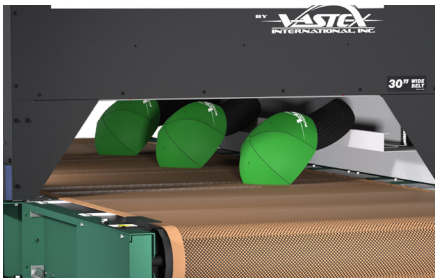
- Removes fumes at exit the dryer
- EXH-18 fits 18" (46cm) wide belts
- EXH-30 fits 30" (76cm) wide belts
- EXH-54 fits 54" (137cm) wide belts
- Available in 120v or 240v



CONVEYOR AIR BAR

FEATURES

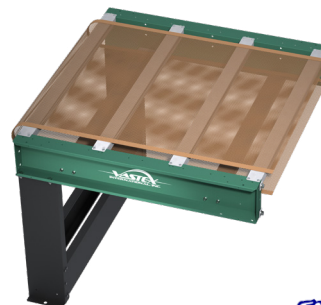
- Cools ink as garments exit the dryer
- CAB-18 fits 16-26" (40-66cm) wide belts
- CAB-30 fits 30" (76cm) wide belts
- CAB-54 fits 54" (137cm) wide belts
- CAB-78 fits 78" (198cm) wide belts
- Work on many non-Vastex dryers
- Available in 120v or 240v



HAT SUPPORT RAIL

FEATURES

- Angles hats so front is parallel with heaters
- HR-1 fits EconoRed II dryers
- HR-2 fits EconoRed III & BigRed Dryers



CONVEYOR EXTENSIONS

Extend your conveyor in
18" (46cm), 36" (92cm) and
54" (137cm) increments

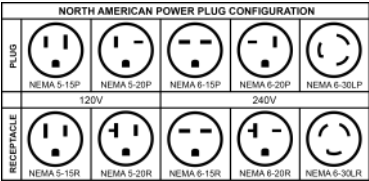


Lo-E & D1 Series

Technical Specifications

CE	Lo-E1D	Lo-E2D	Lo-E3D	D-100	D-1000
Heater Warranty	15 Year	15 Year	15 Year	15 Year	15 Year
Defect Warranty	3 Year	3 Year	3 Year	3 Year	3 Year
Shirts / Hr Plastisol*	64+ @ 90 secs	88+ @ 90 secs	120+ @ 90 secs	110+ @ 25 secs	110+ @ 25 secs
Shirts/hr w/dischage*	64+ @ 60 secs	88+ @ 60 secs	180+ @ 60 secs	50+@ 70 secs	50+@ 70 secs
Shirts/hr DTG/digital*	23 @ 3 min.	45 @ 3 min.	64 @ 3 min.	N/A	N/A
Time in Tunnel Range (mm:ss)	1:00 - 5:00	1:00 - 5:00	1:00 - 5:00	00:17 - 01:20	00:17 - 01:20
Belt Speed	0.7 - 9.3 FPM (0.2 - 2.8 MPM)	0.7 - 9.3 FPM (0.2 - 2.8 MPM)	0.7 - 9.3 FPM (0.2 - 2.8 MPM)	0.6 - 7.4 FPM (0.18 - 2.3 MPM)	0.6 - 7.4 FPM (0.18 - 2.3 MPM)
Belt Motor Torque	100 in-lb	100 in-lb	100 in-lb		
Exhaust (Free Air)	280 CFM (7.9 CMM)	370 CFM (10.5 CMM)	370 CFM (10.5 CMM)	177 CFM (optional)	177 CFM (optional)
Exhaust Diameter	6" (15.24 cm)	6" (15.24 cm)	6" (15.24 cm)	4" (10.16 cm)	4" (10.16 cm)
Overall Length	48" (122 cm)	88" (224 cm)	88" (224 cm)	46" (117 cm)	56" (143 cm)
Overall Width	41" (105 cm)	41" (105 cm)	41" (105 cm)	24" (61 cm)	32" (81 cm)
Overall Height	50" (127 cm)	50" (127 cm)	50" (127 cm)	24" (61 cm)	24" (61 cm)
Belt Width	30" (76cm)	30" (76cm)	30" (76cm)	18" (45.7 cm)	26" (66 cm)
Chamber Length	18"(46cm)	35"(89cm)	52"(132cm)	18" (45.7 cm)	18" (45.7 cm)
Chamber Infeed Width	33.5" (85 cm)	33.5" (85 cm)	33.5" (85 cm)	19.5" (49.5 cm)	27.75" (70.5 cm)
Chamber Infeed Height (adjustable)	2" - 7" (5 - 17.7 cm)	2" - 7" (5 - 17.7 cm)	2" - 7" (5 - 17.7 cm)	2" - 7" (5 - 17.7 cm)	2" - 7" (5 - 17.7 cm)
Heat Range (@ Heater)	0-650F° (0-343C°) @ 230V 0-975F° (524C°) - booster 0-575F° (0-302C°) @ 208V 0-875F° (468C°) - booster	0-650F° (0-343C°) @ 230V 0-975F° (524C°) - booster 0-575F° (0-302C°) @ 208V 0-875F° (468C°) - booster	0-650F° (0-343C°) @ 230V 0-975F° (524C°) - booster 0-575F° (0-302C°) @ 208V 0-875F° (468C°) - booster	0-750 F° (0-399 C°) @ 120 or 240V	0-750 F° (0-399 C°) @ 120 or 240V
Heater Size	16" x 24" (40 x 61 cm)	16" x 24" (40 x 61 cm)	16" x 24" (40 x 61 cm)	16" x 16" (40.6 x 40.6 cm)	16" x 20" (40.6 x 50.8 cm)
Total Wattage	2,850 (2.85kW) @ 230V or 2,975 (2.975kW) @ 208V	4,600 Watts (4.6kW) @ 230V or 4,725 Watts (4.725kW) @ 208V	6,350 Watts (6.35kW) @ 230V or 6,475 Watts (6.475kW) @ 208V	1,625 Watts (1.625kW)	2,050 Watts (2.05kW)
Cost/hr to operate based on 10 cents/kwh	29 cents @ 230V 30 cents @ 208V	46 cents @ 230V 48 cents @ 208V	64 cents @ 230V 65 cents @ 208V	16 cents	20 cents
Electrical Specs	Amperage shown is for reference only, actual amperage at installation will depend on exact line voltage.				
120V, 1 Phase 3 wire 50/60 HZ	N/A	N/A	N/A	FLA = 12.5A	FLA = 16.5A
208V, 1 Phase 3 wire 50/60 HZ	FLA = 15A	FLA = 24A	FLA = 33A	FLA = 8.5A	FLA = 10A
230V, 1 Phase 3 wire 50/60 HZ	FLA = 12.5A	FLA = 20A	FLA = 29A	N/A	N/A
240V, 1 Phase 3 wire 50/60 HZ	FLA = 14A	FLA = 22A	FLA = 31A	FLA = 6.5A	FLA = 8.5A
400V, 3 Phase 5 wire 50/60 HZ	N/A	FLA = 7	FLA = 10A	N/A	N/A
Electrical Connection	Cordset Included NEMA 6-20P	All amps shown are FLA (Full Load Amps), not recommended line size! Dryers must be hard wired to the power terminal provided. A licensed electrician must be consulted and should refer to articles, 210.20(a), 215.3 and 310 of the NEC code.		Cordset Included NEMA 5-15P (120V) NEMA 6-15P (240V)	Cordset Included NEMA 5-20P (120V) NEMA 6-15P (240V)
Unit Weight	220 lbs (100 kg)	360 lbs (163.3 kg)	450 lbs (205 kg)	89 lbs (41 kg)	114 lbs (52 kg)
Shipping Weight**	380 lbs (173 kg)	530 lbs (241 kg)	620 lbs (282 kg)	Box 1 - 57 lbs (26 kg) Box 2 - 16 lbs (7.3 kg) Box 3 - 21 lbs (9.6 kg) Boxes on skid - 115 lbs (52 kg)	Box 1 - 17 lbs (7.7 kg) Box 2 - 24 lbs (10.9 kg) Box 3 - 35 lbs (15.9 kg) Box 4 - 43 lbs (19.5 kg) Box 5 - 11 lbs (5 kg) Boxes on Skid - 226 lbs (105.5 kg)
Shipping Dimensions**	49" x 45" x 40" (124 x 114 x 102 cm)	54" x 43" x 60" (137 x 109 x 152 cm)	49" x 45" x 59" (124 x 114 x 150 cm)	Box #1 - 54" x 29" x 8" (138 x 74 x 21 cm) Box #2 - 21" x 21" x 7" (53x53x18 cm) Box #3 - 25" x 18" x 6" (64 x 46 x 15 cm) On Skid - 60" x 32" x 22" (153 x 82 x 56 cm)	Box #1 - 27" x 21" x 7" (69 x 54 x 18 cm) Box #2 - 31" x 21" x 9" (79 x 54 x 23 cm) Box #3 - 36" x 31" x 8" (92 x 79 x 21 cm) Box #4 - 36" x 31" x 8" (92 x 79 x 21 cm) Box #5 - 31" x 15" x 8" (79 x 38 x 21 cm) On Skid - 49" x 37" x 36" (125 x 94 x 92 cm)

* Production speeds are estimates are based on 16" centers and will vary depending on ink manufacturer, humidity of shop, and other variables.
** All shipping weights and dimensions are for continental US shipping only. Call for other shipping specifications. Ex-works from Bethlehem, PA.



1 in = 2.54 cm
1 lb = 0.454 kg