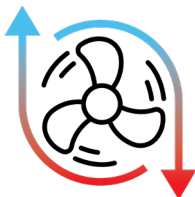


# DTG/DTF/SCREEN INFRARED DRYERS

## BigRed4-D SERIES

**15 YEAR**  
HEATER WARRANTY

**DUAL  
AIR  
SYSTEM**



Forced-Air-Make-up provides:

- Cool chamber skin
- Controlled and filtered exhaust make-up air\*

Downdraft Exhaust

- Pulls contaminated air below belt
- Holds down film and light material
- Moisture drip pan below machine
- Filters keep blower & stack clean



**BR4D-V54**



BY CERTIFICATION EXPERTS  
THE NETHERLANDS

Standard Wattage

Belt Width x Length

Chamber (tunnel) Length

### BR4D-V30

11,400w

30" x 8¾' (76.2 x 267cm)

4.5' (137.2cm)

### BR4D-V54\*\*\*

22,800w

54" x 8¾' (137.2 x 267cm)

4.5' (137.2cm)

CURE TIMES**	1 Row	3 Rows	2 Rows
Plastisol @ 25 secs.	475+/hr	1,425+/hr	950+/hr
Water Based/Discharge @ 50 secs.	216+/hr	648+/hr	432+/hr
Digital White Ink @ 3 min.	60/hr	180/hr	120/hr
Digital White Ink @ 8 min.	24/hr	60/hr	48/h

(w/ optional side heaters)

## Features

### ACCURATE

Dual zone temperature controllers with +/-1 degree F accuracy. Digital PID with Fuzzy logic is the most advanced in the industry.

### SMART

Cool Down Mode for easier shut down.

### ADJUSTABLE

2 - 7" (5 - 17.7cm) belt-to-heater height adjustment\*\*\*\*

### CONVENIENT

Digital belt speed voltmeter, a must have!

### HEAVY DUTY

"X-Series" Conveyor Belt Tracking System w/HD drive.

### EXPANDABLE

Add heat chambers and belt extensions. (rear idler required over 17' long)

## Options

- Side heaters (expand cure zone to full belt width)\*\*\*\*
- Add heat chambers @ 4.5' (137 cm) long.
- Belt extensions, front or rear, 18" (46 cm) increments
- 3-Phase, 208, 380, 480 voltages available
- Conveyor Air Bar
- Exhaust Hood, provides extra fume extraction
- Locking casters for easy mobility
- Donut Probe

\* Make-up air is: Added air that "makes up" for or replaces air that is being removed by your machines exhaust.

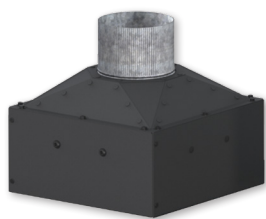
\*\* Production speeds are estimates are based on 16" centers and will vary depending on ink manufacturer, humidity of shop, and other variables.

\*\*\* All BigRed V54 Dryers come standard in Three Phase wiring.

\*\*\*\* Heater height 4-7" (10.2 - 17.7cm) with optional side heaters.



# INFRARED DRYER ACCESSORIES



## EXH-D

Add-On exhaust for  
D-100 and D-1000

## S-100



Mobile Stand w/ wheels

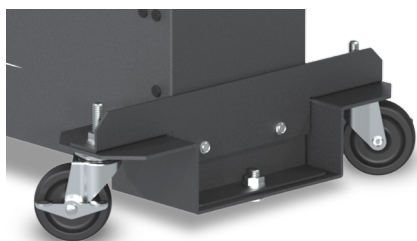
Two sizes available

- 27 x 27" (68.6 x 68.6 cm)
- 27 x 35" (68.6 x 88.9 cm)

Optional screen shelves and drawer kits

Perfect for:

- Presses and dryers
- PTF-100 powder shaker
- Additional worktop space



## WS-E-DD

Drop Down Wheel Set for  
DB, LR & EC-I Dryers

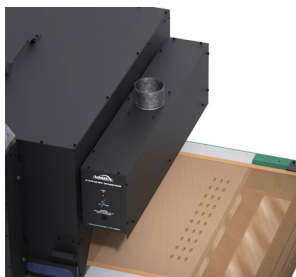
## WS-EHD

Drop Down Wheel Set for  
EC-II, ER & BR Dryers



## WS-EC

Standard Wheel Set for  
all non-tabletop Dryers

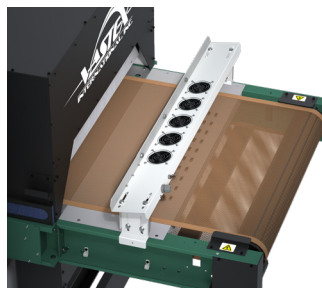


## EXHAUST HOOD

Strongly recommended for DTF adhesives

### FEATURES

- Removes fumes at exit the dryer
- EXH-D1H fits D-100 and D-1000 (chamber mounted)
- EXH-18 fits 18" (46cm) to 30" (76cm) wide belts
- EXH-42 fits 54" (137cm) wide belts
- EXH-66 fits 78" (198cm) wide belts
- Available in 120v or 240v



## CONVEYOR AIR BAR

### FEATURES

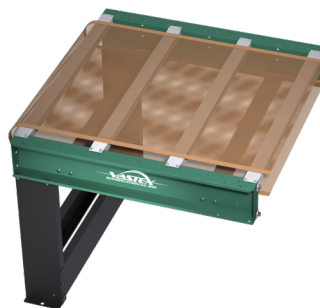
- Cools ink as garments exit the dryer
- CABX-30 fits 33.1-39.1" (84-99cm) wide conveyor
- CABX-54 fits 58.3-64.3" (148-163cm) wide conveyor
- CABX-78 fits 82.3-88.3" (209-224cm) wide conveyor
- Works on many non-Vastex dryers
- Available in 120v or 240v



## HAT SUPPORT RAIL

### FEATURES

- Angles hats so front is parallel with heaters
- HR-1 fits EconoRed II dryers
- HR-2 fits EconoRed III & BigRed Dryers



## CONVEYOR EXTENSIONS

Extend your conveyor in  
18" (46cm), 36" (92cm) and  
54" (137cm) increments



# EconoRed VI & BigRed

## Technical Specifications

CE	ER-VI-30	ER-VI-54	ER-VI-78	BR4D-V30	BR4D-V54
Heater Warranty	15 Year	15 Year	15 Year	15 Year	15 Year
Defect Warranty	3 Year	3 Year	3 Year	3 Year	3 Year
Shirts / Hr* Plastisol @ 25 secs	900+	2 Rows - 1,800+	3 Rows - 2,700+	475+	3 Rows - 1,425+ 2 Rows - 950+
Shirts / Hr* - Waterbased/ Discharge	300+ @ 70 secs.	2 Rows - 600+ @ 70 secs.	3 Rows - 900+ @ 70 secs.	216+ @ 50 secs.	3 Rows - 648+ @ 50 secs. 2 Rows - 432+ @ 50 secs.
Shirts/hr* - DTG/digital	N/A	N/A	N/A	60 @ 3 min. 24 @ 8 min.	3 Rows - 180 @ 3 min, 72 @ 8 min. 2 Rows - 120 @ 3 min, 48 @ 8 min.
Time in Tunnel Range (mm:ss)	00:34 - 02:58	00:34 - 02:58	00:34 - 02:58	00:12 - 01:45	00:12 - 01:45
Belt Speed	3 - 36 FPM (0.9 - 11 MPM)	3 - 36 FPM (0.9 - 11 MPM)	3 - 36 FPM (0.9 - 11 MPM)	1.8 - 23.6 FPM (0.6 - 7.2 MPM)	1.8 - 23.6 FPM (0.6 - 7.2 MPM)
Exhaust (Free Air)	2 @ 650 CFM (18.4 CMM)	2 @ 550 CFM (15.6 CMM)	2 @ 700 CFM (19.8 CMM)	500 CFM (14.2 CMM)	700 CFM (19.8 CMM)
Exhaust Stack Diameter	2 @ 8" (20.32 cm)	2 @ 8" (20.32 cm)	2 @ 8" (20.32 cm)	6" (15.24 cm)	6" (15.24 cm)
Overall Length	159" (404 cm)	159" (404 cm)	159" (404 cm)	105" (267 cm)	105" (267 cm)
Overall Width	45.2" (114.8 cm)	69.2" (175.8 cm)	93.2" (236.7 cm)	47.3" (120.2 cm)	71.4" (181.4 cm)
Overall Height	60.9" (154.7 cm)	60.9" (154.7 cm)	60.9" (154.7 cm)	51.6" (131.1 cm)	51.6" (131.1 cm)
Belt Width	30" (76 cm)	54" (137 cm)	78" (198 cm)	30" (76 cm)	54" (137 cm)
Chamber Length	108" (275cm)	108" (275cm)	108" (275cm)	54" (137cm)	54" (137 cm)
Chamber Infeed Width	34.5" (88 cm)	58.5" (149 cm)	82.5" (209cm)	34.5" (88 cm)	58.5" (149 cm)
Chamber Infeed Height (adjustable)	2" - 7" (5 - 17.7 cm)	2" - 7" (5 - 17.7 cm)	2" - 7" (5 - 17.7 cm)	4.5" - 7" (11.5 - 17.7 cm)	4.5" - 7" (11.5 - 17.7 cm)
Heat Range (@ Heater)	0-900 F° (0-482 C°) @ 240V	0-900 F° (0-482 C°) @ 240V	0-900 F° (0-482 C°) @ 240V	0-900F° (0-482C°) @ 240V 0-1150F° (621C°) - booster	0-900F° (0-482C°) @ 240V 0-1150F° (621C°) - booster
Heater Size & Standard Wattage**	12" x 24" (30 x 61 cm) 6 @ 2,600 = 15,600 Watts 240V, 400V, & 480V	12" x 48" (30 x 122 cm) 6 @ 5,200 = 31,200 Watts 240V, 400V, & 480V	12" x 72" (30 x 183 cm) 6 @ 7,800 = 46,800 Watts 240V, 400V, & 480V	4 @ 12" x 24" (30 x 61 cm) Zone 1 @ 3,600 Watts Zone 2 @ 7,800 Watts 11,400 Watts Total 240V & 480V (10,800 Watts Total 400V)  Optional Side Heaters 2 @ 3" x 47" (7.6 x 120 cm) 1,400 watts per side	4 @ 12" x 48" (30 x 122 cm) Zone 1 @ 7,200 Watts Zone 2 @ 15,600, Watts 22,800 Watts Total 240V (21,600 Watts Total 400V) (28,800 Watts Total 480V)  Optional Side Heaters 2 @ 3" x 47" (7.6 x 120 cm) 1,400 watts per side
Cost / hour to operate based on 10 cents / kwh	\$1.56 @ 240V	\$3.12 @ 240V	\$4.68 @ 240V	\$1.14 @ 240V	\$2.28 @ 240V
Electrical Specs**	Amperage shown is for reference only, actual amperage at installation will depend on exact line voltage.				
240V, 1 Phase 3 wire 50/60 HZ	FLA = 76A	N/A	N/A	FLA = 59A	FLA = 110A
240V, 3 Phase 4 wire 50/60 HZ	FLA = 45A	FLA = 89A	N/A	FLA = 35A	FLA = 67A
400V, 3 Phase 5 wire 50/60 HZ	FLA = 27A	FLA = 50A	FLA = 73A	FLA = 21A	FLA = 36A
480V, 3 Phase 4 wire 50/60 HZ	FLA = 24A	FLA = 42A	FLA = 61A	FLA = 18A	FLA = 31A
Electrical Connection	All amps shown are <b>FLA (Full Load Amps)</b> , not recommended line size! Dryers on this page must be hard wired to the power terminal provided. A licensed electrician must be consulted and should refer to articles, 210.20(a), 215.3 and 310 of the NEC code.				
Shipping Weight***	1 @ 900 lbs (409 kg) 1 @ 755 lbs (343 kg)	1 @ 1,375 lbs (624 kg) 1 @ 1,325 lbs (601 kg)	1,170 lbs (531 kg)	1,018 lbs (462 kg)	1,438 lbs (653 kg)
Shipping Dimensions***	2 @ 61" x 43" x 65" (155 x 110 x 166 cm)	2 @ 93" x 65" x 65" (237 x 166 x 166 cm)	107 x 64" x 73" (272 x 163 x 185 cm)	72" x 61" x 63" (183 x 155 x 160 cm)	92" x 65" x 63" (234 x 161 x 160 cm)

1 in = 2.54 cm  
1 lb = 0.454 kg

\* Production speeds are estimates are based on 16" centers and will vary depending on ink manufacturer, humidity of shop, and other variables. Optional side heaters are required for 3 rows.

\*\* Alternate wattages and voltage may be available by special request. (208V)

\*\*\* All shipping weights and dimensions are for continental US shipping only. Call for other shipping specifications. Ex-works from Bethlehem, PA.